

Created by:
QA Engineer



**New Zealand
Tube Mills**

TECHNICAL SPECIFICATION

Page No:

1 of 1

Revision Date:

No:

**NZTM-Q08B - Stainless tube sizes manufactured by New Zealand
Tube Mills vs international standards**

Approved by:

31-Oct-13

07

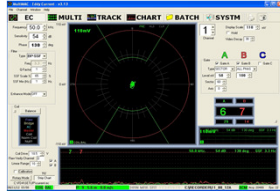
QA Engineer



Weld bead
internally
Cold worked



Weld bead
not internally
Cold worked



On-line Eddy-current
tester

✓ - Comply to the specified standard

X - Does not Comply to the specified standard

Standard (Round) OD in Inch	Standard (Round) OD in mm	Mill No		Weld Bead Cold worked	Eddy Current Tested	International Standards						
						ASTM A554 Architectural / General Purpose	ASTM A269 "Annealed"	ASTM A249 "Annealed"		AS1528.1 Food Quality (Sizes 12.7 to 25.4 cold work not required)		
								Thickness	Thickness	Thickness	Thickness	
		Main	Standby		On-line							
5/16 "	7.94 Ø	9		X	✓	✓	X		X		✓	0.9
3/8 "	9.53 Ø	9		X	✓	✓	X		X		✓	0.9, 1.2
	12.0 Ø	9		X	✓	✓	X		X		X	
1/2 "	12.7 Ø	9		X	✓	✓	X		X		✓	0.9, 1.2, 1.5, 1.6
	14.7	9		X	✓	✓	X		X		X	
5/8 "	15.88 Ø	14		X	✓	✓	X		X		✓	0.9, 1.2, 1.5, 1.6
3/4 "	19.05 Ø	14		X	✓	✓	X		X		✓	0.9, 1.2, 1.5, 1.6
7/8 "	22.22 Ø	14		X	✓	✓	X		X		✓	0.9, 1.2, 1.5, 1.6
1 "	25.4 Ø	14	13	X	✓	✓	✓	0.9, 1.2, 1.6	✓	0.9, 1.2, 1.6	✓	0.9, 1.2, 1.5, 1.6
1 1/8 "	28.6 Ø	13		X	✓	✓	X		X		X	
1 1/4 "	31.75 Ø	13		✓	✓	✓	✓	0.9, 1.2, 1.6	✓	0.9, 1.2, 1.6	✓	0.9, 1.2, 1.5, 1.6
1 3/8 "	34.93 Ø	13		X	✓	✓	X		X		X	
1 1/2 "	38.1 Ø	13		✓	✓	✓	✓	0.9, 1.2, 1.6	✓	0.9, 1.2, 1.6	✓	0.9, 1.2, 1.5, 1.6
1 3/4 "	44.5 Ø	13	12	✓	✓	✓	✓	1.2, 1.6, 2.0	✓	1.2, 1.6, 2.0	✓	0.9, 1.2, 1.5, 1.6, 2.0
1 7/8 "	47.6 Ø	13		✓	✓	✓	X		X		X	
2 "	50.8 Ø	13	12	✓	✓	✓	✓	0.9, 1.2, 1.6, 2.0	✓	0.9, 1.2, 1.6, 2.0	✓	0.9, 1.2, 1.5, 1.6, 2.0
2 1/2 "	63.5 Ø	13	12	✓	✓	✓	✓	1.6, 2.0	✓	1.6, 2.0	✓	1.2, 1.5, 1.6, 2.0
3 "	76.2 Ø	12		✓	✓	✓	X		X		✓	1.2, 1.5, 1.6, 2.0
4 "	101.6 Ø	12		✓	✓	✓	X		X		✓	1.5, 1.6, 2.0
5 "	127.0 Ø	12		✓	✓	✓	X		X		✓	1.6, 2.0
6 "	152.4 Ø	12		✓	✓	✓	X		X		✓	1.6, 2.0

For further information please contact Sales Office via Email "sales@nztubemills.co.nz" or "quality@nztubemills.co.nz"